



TECHNICAL SPECIFICATION SHEET

RS-090 Washing Machine Leak Detection & Shut-Off System

VALVE SIZE: DUAL-PORT 3/4"



- Disables the water supply to your washing machine when a water leak is detected.
- Activates audible alarm and dry contact to send a signal to a home security system or a relay to control power to the washer.
- Kit includes receiver/alarm box, sensor with 8' lead wire, 2-port side-by-side valve with electric actuator and 120 VAC power supply.
- For use with any standard washing machine. Check with the machine manufacturer before using with high-efficiency units.
- System is reusable – when the alarm sounds, fix the problem and reset the unit for continued protection.
- Powered by a standard wall outlet (120 VAC).

RS-090 Component Dimensions

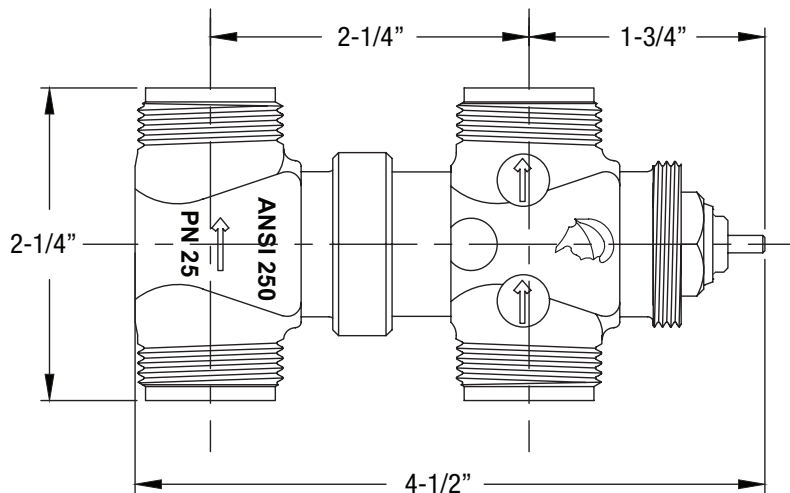
Model #	Alarm Control (L x W x H)	Sensor (Dia. x H)	Wall Plug (L x W x H)	Sensor Range	Hoses (2)
RS-090	2.5" x 1" x 2.5"	3" x 1"	2.25" x 2" x 3"	8'	9" steel braided – one straight and one 90-degree elbow connection

Direct-Mount 2-Way, 4-Port Valve Body

Low-zinc bronze alloy, male/male NPT.

- | | | | |
|--------------------------|-------------------------------------|---------------------------|----------------------|
| • Pressure Rating: | ANSI 250 (400 PSI at 32°F to 150°F) | • Valve Stem Packing: | Double EPDM |
| • Maximum Test Pressure: | 1200 PSI | • Valve Seat: | Integral bronze |
| • Stem Travel: | 4mm | • Valve Disc and Plunger: | EPDM |
| • Maximum Temperature: | 250°F | • Valve Spring: | Stainless steel |
| • Valve Stem: | Burnished 303 stainless steel | • End Connections: | 3/4" hose connection |

Valve Dimensions:



Reliance Detection Technologies, LLC
27 Business Park Drive, Branford, CT 06405

RelianceDetection.com 888-771-4929

• Tel: 203-488-2684 • Fax: 203-481-5036

• info@RelianceDetection.com





TECHNICAL SPECIFICATION SHEET

RS-090 Washing Machine Leak Detection & Shut-Off System

VALVE SIZE: DUAL-PORT 3/4"

Electric Actuator

- Housing made of high-temperature composite glass-filled nylon.
- Direct connection of actuator to the valve body is made by M30 x 1.5 brass ring.
- Reversible, brushless synchronis electric motor maintains constant control speed to keep the cycle time constant.
- Maximum stem output is force balance controlled with electronic shut-off when end travel is detected in both directions.

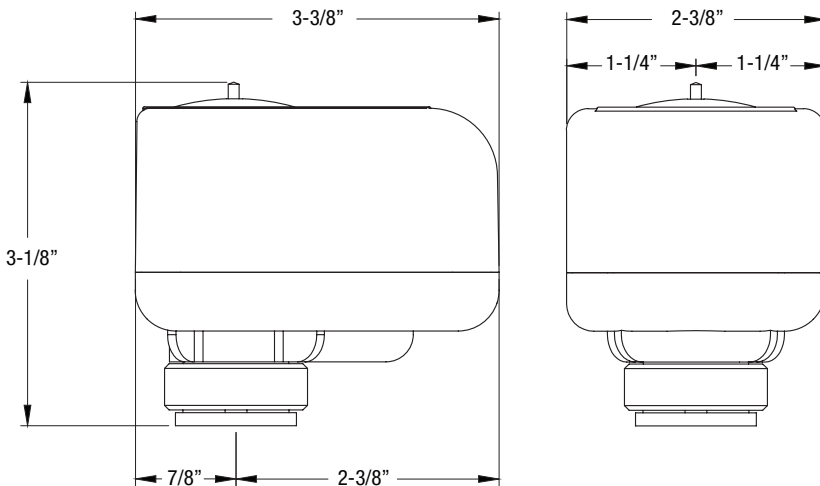
Electric Actuator Specifications:

- Maximum Working Force: 48 lbs. or 213N
- Working Time in Seconds: 90 seconds
- Duty Rating: 100%
- Travel: 4.0mm
- Position Indicator: Standard
- Working Temperature: 40°F to 120°F
- Weight: 0.7 lbs.
- Noise Level: 35 dB
- Conforms to CE and ROHS requirements
- Low voltage as per CSA Class ii 24 VAC devices

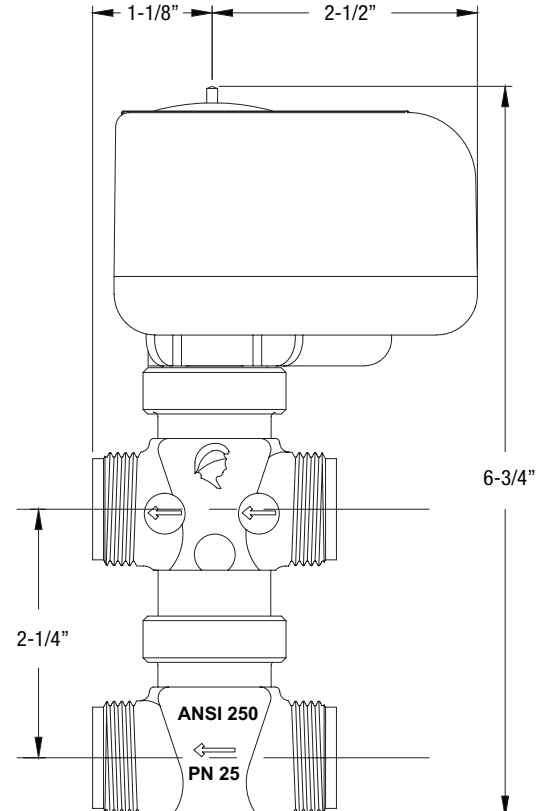
Electric Actuator Power Consumption:

- Input Voltage: 24 VAC
- Frequency: 60/50Hz
- Current: 0.045 Amp
- Power: 1VA

Actuator Dimensions:



Valve & Actuator Dimensions:



Reliance Detection Technologies, LLC
 27 Business Park Drive, Branford, CT 06405

RelianceDetection.com 888-771-4929

• Tel: 203-488-2684 • Fax: 203-481-5036 • info@RelianceDetection.com

