



Installation Manual

RS-090

Operation and Installation Instructions for FloodMaster Washing Machine Leak Detection/Alarm Shut-Off System – Model RS-090

SYSTEM OVERVIEW:

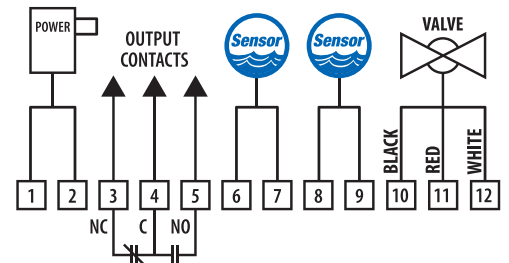
The RS-090 Series Washing Machine Leak Detection/Alarm Shut-Off System is designed to sound an audible alarm and shut down the water feed line when the sensor puck comes in contact with conductive liquid (such as water). The unit requires a 110 VAC wall outlet for power and provides an easy reset button. In the event the alarm activates, locate the source of the leak, remove the sensor puck from the water and dry the metal contacts at the bottom of the sensor puck. Correct the problem causing the leak and place the sensor puck in the desired leak detection location once again as required. Press and release the reset button on the alarm box to open the valve and begin the flow of water again.

All units provide an optional connection to a home security alarm system or control panel. Additional sensor pucks can be added to the system where a wider area of leak detection is required.



INSTALLATION INSTRUCTIONS:

- Turn off the hot and cold water valves to the washing machine.
- Remove the hoses from the valve end and not the washing machine end.
- The receiver connector comes pre-wired with basic connections to the power supply, sensor and electric valve actuator. Using an appropriate screwdriver, make any additional electrical connections as may be desired for output contacts or additional sensors per the diagram provided. *(Note: additional sensors can be connected to either 6 & 7 or 8 & 9, as wiring space allows.)*
 - Snap the terminal wiring block into the receiver housing at the mating slot provided.
- Connect the other end of the hoses to the dual FloodMaster valves. Make sure that the arrows on the valve bodies point toward the washing machine.
- Connect the washing machine's hoses to the other end of the FloodMaster valves.
- Connect the actuator to the shutoff valve and hand tighten the knurled nut.
- Tighten all connections. Open the house hot and cold water valves and check for leaks.
- Mount the FloodMaster alarm box on a convenient wall with the wires facing down.
- Plug the power transformer into a 110 VAC outlet; the green power ON/OFF indicator light on the alarm box will turn on.
- Place the sensor puck under the washing machine or in a place where it will detect any water that may leak.
- Function Test:
 - Place the sensor puck on a wet paper towel.
 - The audible alarm will sound and the valve will begin to close.
 - Wait two minutes and turn on the washing machine; no water should flow into the washing machine.
 - Remove the sensor puck from the paper towel and dry off the steel pins located on the bottom. Place the sensor puck on the dry floor where leak detection is desired.
 - Press and release the reset button on the alarm box to open the valve and begin the flow of water again.
 - Repeat steps a-e for each sensor puck on the system.



MAINTENANCE:

Alarm Box – Exercise (press and release) the reset button on the alarm box annually to ensure correct operation and to maintain product warranty status.

OPTIONAL FEATURE AND CONNECTIONS:

Additional Sensor Pucks – For applications where a wider area of leak detection coverage is desired, additional sensor pucks can be added to the system. Wire additional sensor pucks to the terminal strip to pins 6 & 7 or 8 & 9. Additional sensor pucks are sold separately; custom lengths are available.

Security Alarm Connection – Use for applications where connection to a home security system or control panel is desired. This dry contact relay signal can be wired per your application requirements as follows:

Normally Closed Circuit – 3 & 4

Normally Open Circuit – 4 & 5



Reliance Detection Technologies, LLC
27 Business Park Drive, Branford, CT 06405

RelianceDetection.com 888-771-4929
• Tel: 203-488-2684 • Fax: 203-481-5036



• info@RelianceDetection.com